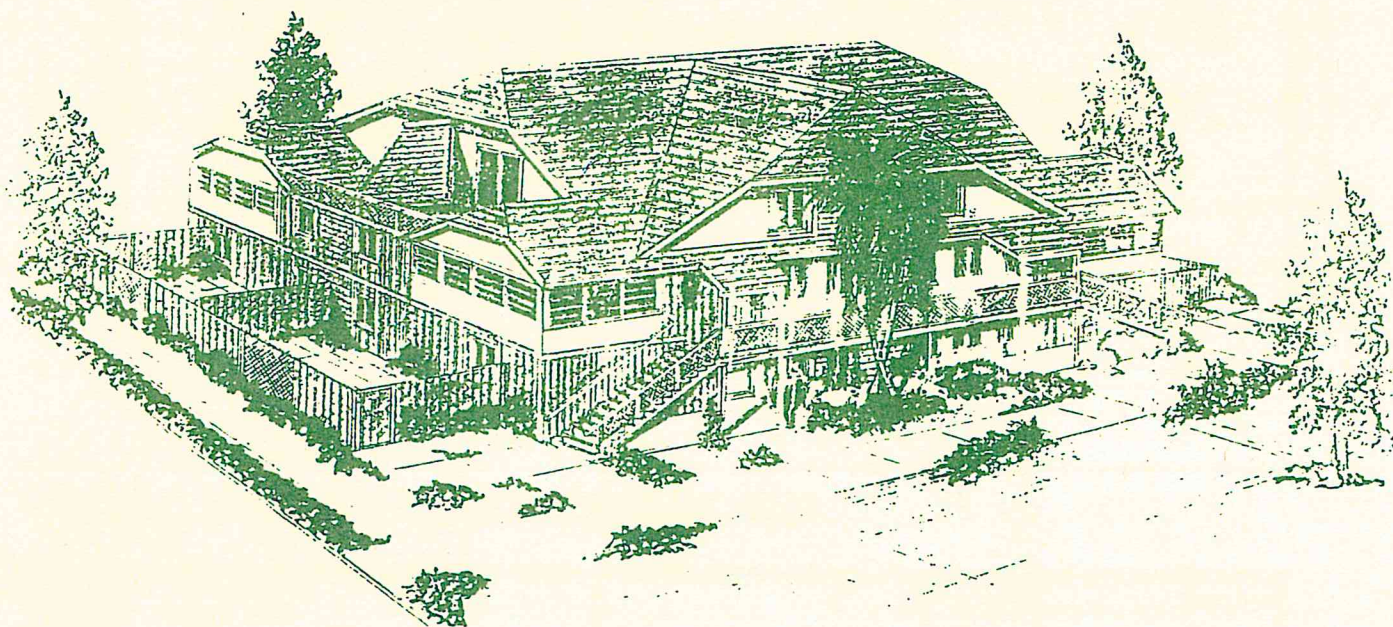
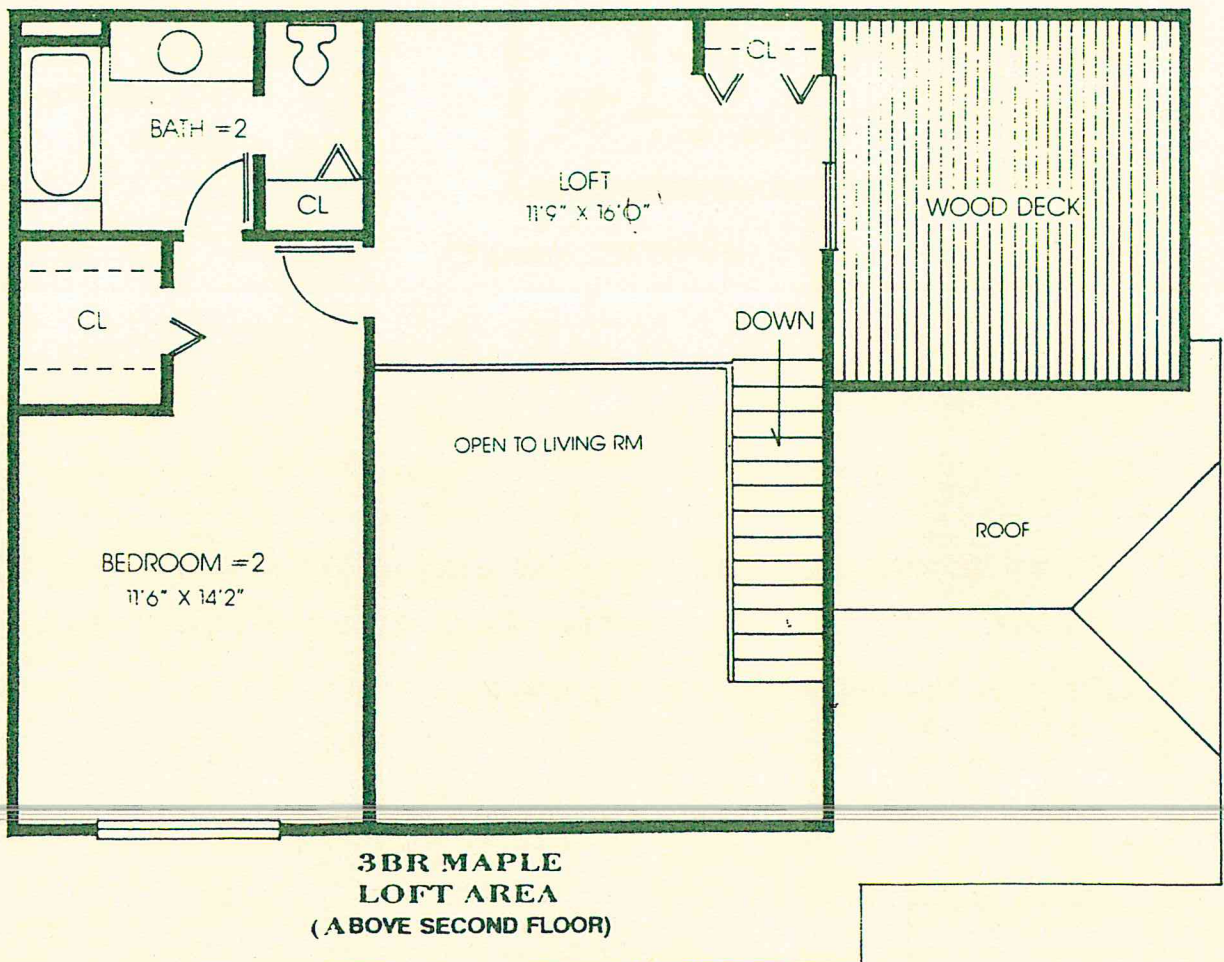
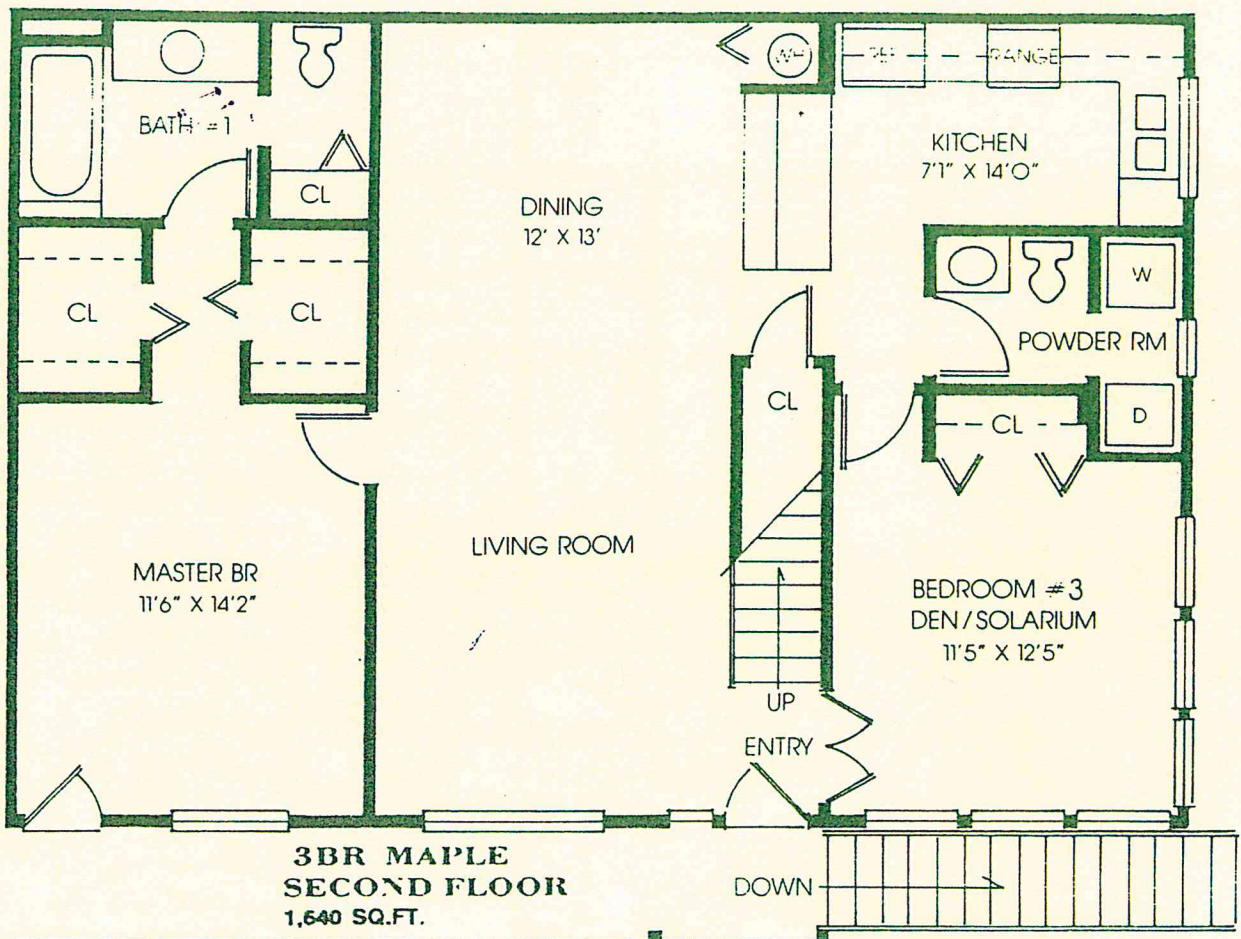


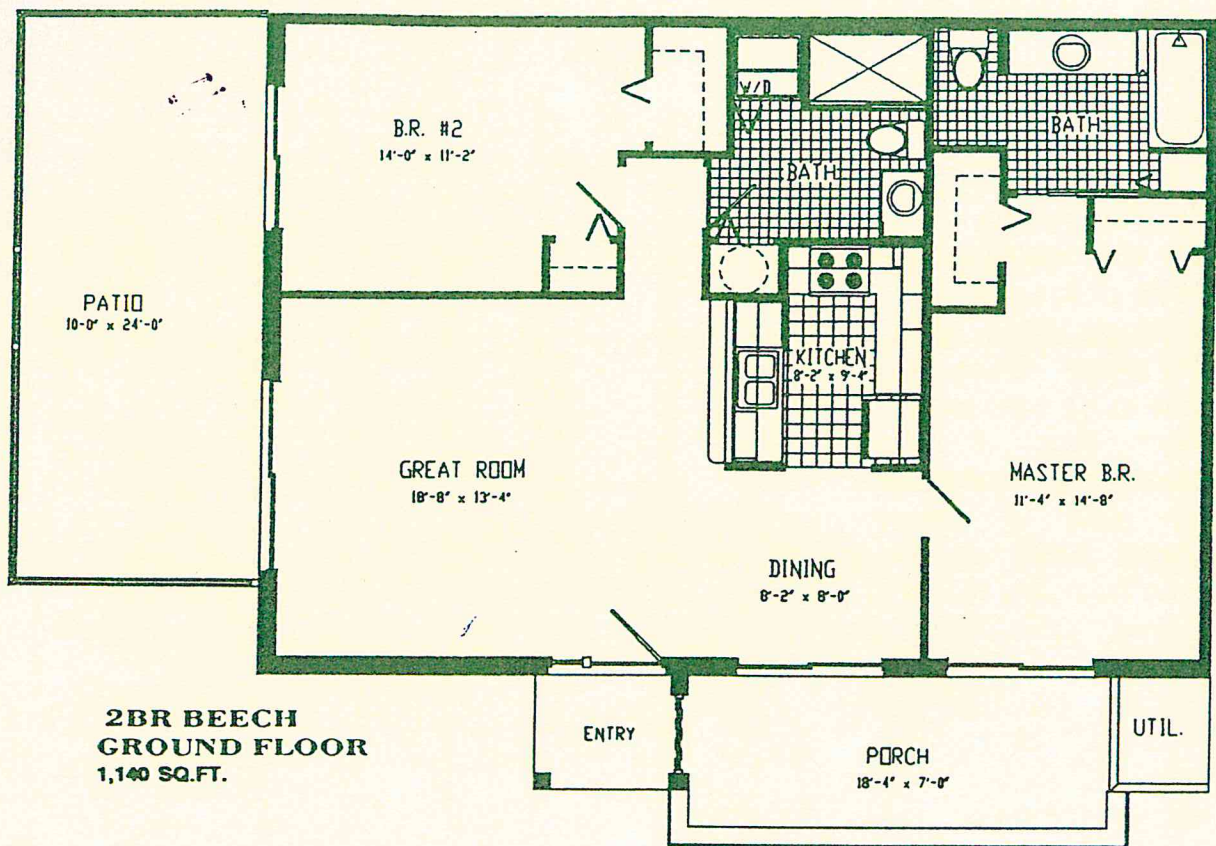
May. 1996



Bella Vista, a private
residential club community
"On the Park" in Jupiter.

On the Park





MAPLE AND BEECH SPECIFICATIONS

INTERIOR FEATURES

- * Marble window sills
- * Wood louvered bi-fold closet doors
- * Orange peel textured wall finish
- * Ceramic Tile flooring in kitchen/bath/foyer
- * Wall to wall carpeting w/ rebond pad
- * Quick recovery water heater (40gal)
- * 5ft. enamel steel tub in bath w/shower
- * Single handle water faucets
- * Locksets on bedroom doors
- * Brass door handles
- * Dead bolt lock on entry door
- * Designer lighting
- * Pre-wired cable outlets (4)
- * Pre-wired phone outlets (4)
- * Pre-wired ceiling outlets (4)
- * Ceiling fans (2)
- * Smoke detector
- * Medicine cabinets(2)
- * Mica Countertops
- * Mirrors over bath vanity
- * Ventilated vinyl coated steel shelves in closets
- * Dryer vent to exterior

STANDARD ENERGY FEATURES

- * High efficiency air-conditioning (9-seer)
- * R-19 ceiling insulation
- * Steel insulated entry door with weather-stripping
- * Low maintenance, continuously vented soffits

EXTERIOR FEATURES

- * Architectural designed exteriors
- * Rough sawn cedar soffit
- * Landscaping
- * Fully sodded/irrigated common areas
- * Bronze aluminum window frames w/ tinted glass
- * Cedar fascia
- * Outside weatherproof electrical outlet

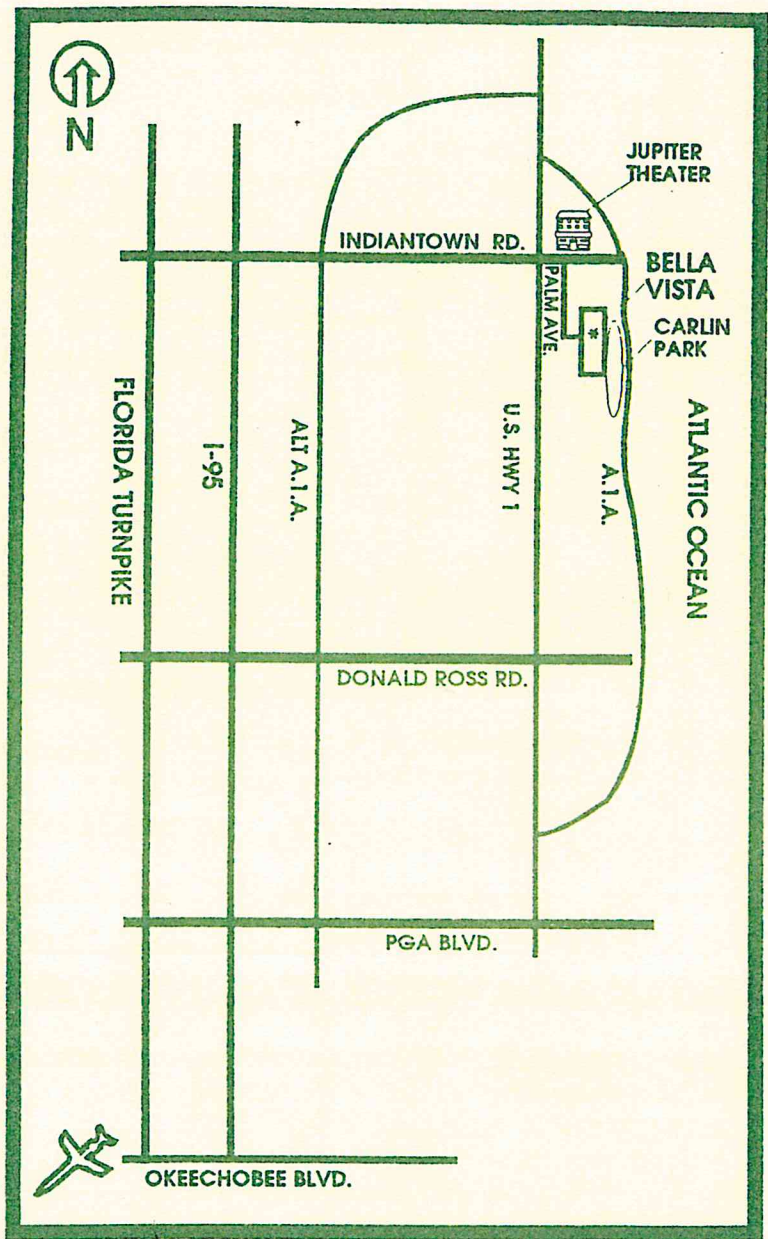
GENERAL FEATURES

- * Wood sundeck (Maple)
- * Fenced concrete patio (Beech)
- * "S" Tile roof
- * Soil poisoning treatment under slab for termites
- * Visqueen vapor barrier under concrete slab
- * Door chime
- * Wood mold for base board and door trim

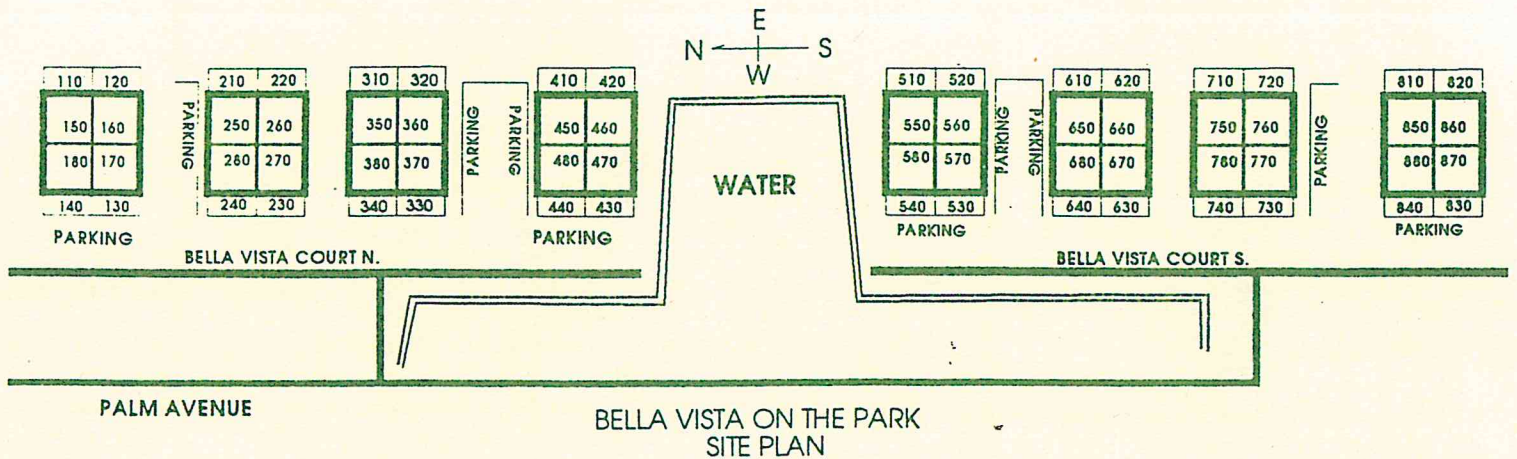
KITCHEN FEATURES

- (Kenmore Appliances)
- * 18 cu.ft. refrigerator with icemaker (#30870)
- * Deluxe washer and dryer (#24671/#64671)
- * Microwave (#89150)
- * Self-cleaning oven/range (#93301)
- * Dishwasher (#14415)
- * Disposal (#6040)
- * Double stainless steel sink
- * Merillat pickled oak cabinets

Bella Vista on the Park is a beautiful and tranquil development bordered by Carlin Park on one side and a 2.5 acre lake on the other. Our development consists of 64 units within 8 buildings. Each of the chalet styled buildings is unique in its own setting divided into 4 two bedroom units on the first floor and 4 three bedroom units on the second floor, including a loft level. Take time to enjoy our fantastic amenities. We offer an attractively landscaped swimming pool area with a heated 25' x 50' pool and a gazebo style clubhouse. We also offer 2 tennis courts, 2 racquetball courts, and the benefits of Carlin Park such as the infamous Heart Trial (1.5 mile fitness course).



OCEAN & CARLIN PARK



BELLA VISTA ON THE PARK DEVELOPMENT, INC
830 BELLA VISTA COURT SOUTH
JUPITER, FLORIDA 33477

OFFICE (407) 747-2200
MODEL (407) 747-8049
FAX (407) 747-1942

ORAL REPRESENTATIONS CANNOT BE RELIED UPON AS CORRECTLY STATING REPRESENTATIONS OF THE DEVELOPER. FOR CORRECT REPRESENTATIONS, MAKE REFERENCE TO THIS BROCHURE AND TO THE DOCUMENTS REQUIRED BY SECTION 718.503, FLORIDA STATUTES, TO BE FURNISHED BY A DEVELOPER TO A BUYER OR LESSEE