



# THE RITZ-CARLTON RESIDENCES

PALM BEACH GARDENS

THE ESTATE COLLECTION

## RESIDENCES 08/10/14

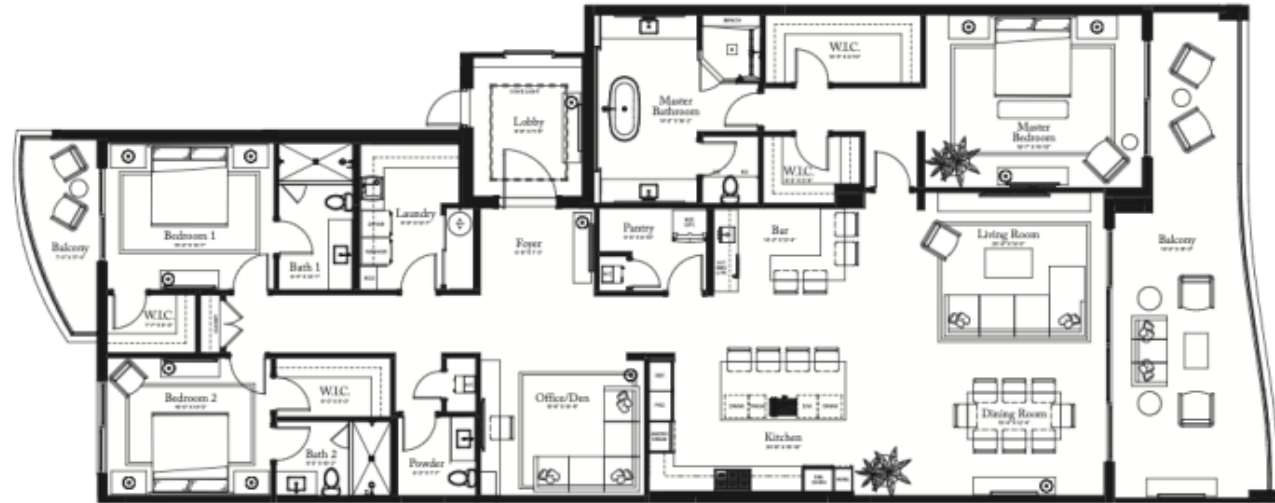
RESIDENCES 08 & 10: FLOORS 2-7  
RESIDENCE 14: FLOORS 2-6

### PLAN G

3 BEDROOMS / 3.5 BATHROOMS  
OFFICE/DEN

INTERIOR: 3,230 SQ. FT.  
EXTERIOR: 559 SQ. FT.

TOTAL: 3,789 SQ. FT.



THIS RITZ-CARLTON RESIDENCES, PALM BEACH GARDENS ARE NOT OWNED, DEVELOPED OR SOLD BY HARBORET INTERNATIONAL, INC. OR ITS AFFILIATES ("HARBORET"). HARBORET INTERNATIONAL, LLC HAS THE RITZ-CARLTON MARKS UNDER A LICENSE FROM HARBORET, WHICH HAS NOT CONFIRMED THE ACCURACY OF ANY STATEMENTS OR REPRESENTATIONS MADE ABOUT THE PROJECT.

ALL REPRESENTATIONS CANNOT BE RELIED UPON AS CORRECTLY STATING THE REPRESENTATIONS OF THE DEVELOPER. FOR CORRECT REPRESENTATIONS, MAKE REFERENCE TO YOUR BROCHURE AND TO THE DOCUMENTS REQUIRED BY SECTION 719.04, FLORIDA STATUTES, TO BE FURNISHED BY A DEVELOPER FOR A BUYER OR LESSEE. THIS OFFERING IS MADE ONLY BY THE PROSPECTUS FOR THE CONDOMINIUM AND NO STATEMENT SHOULD BE BELIEVED OR NOT MADE IN THE PROSPECTUS. THIS IS NOT AN OFFER TO SELL, OR SOLICITATION, OR OFFERS TO BUY, THE CONDOMINIUM UNITS IN EXCESS NUMBER UNITS OFFER OR SOLICITATION CANNOT BE MADE. PRICE, PLANS AND SPECIFICATIONS ARE SUBJECT TO CHANGE WITHOUT NOTICE. ALL DIMENSIONS ARE APPROXIMATE AND SUBJECT TO CHANGE IN ACCORDANCE WITH THE AGREEMENT FOR SALE. Based dimensions are measured to the centerline of the exterior walls and the centerline of interior dividing walls and to the face of the dimension that would be determined by using the description and definition of the "Unit" set forth in the Declaration (which generally only include the interior spaces between the exterior walls and include interior structural components). Additionally, measurements of rooms are both on any floor plan are generally taken at the greater points of each given room (as the room may a portion thereof), without regard for any setbacks. Accordingly, the area of the actual room will typically be smaller than the product obtained by multiplying the stated length times width. All dimensions are approximate, and all floor plans and development plans are subject to change. Noting herein shall constitute an offer to sell or a solicitation of offers to buy in states in which such offer or solicitation is not prohibited. The drawings, renderings, graphic materials, plans, specifications, notes, conditions and covenants contained in this brochure are prepared only and the Developer reserves the right to modify, correct or withdraw any or all of same in its sole discretion and without prior notice. All improvements, designs and construction are subject to their obtaining the appropriate federal, state and local permits and approvals for same. These drawings are conceptual only and are for the convenience of reference. They should not be relied upon as representations, covenants or implied, of the final detail of the residences. The developer expressly reserves the right to make modifications, revisions, and changes to those drawings in its sole and absolute discretion. All depiction of appliances, fixtures, finishes, floor coverings and other systems of detail are conceptual only and are not necessarily included in each Unit. Consent prior Agreement and the Program for the items included with the Unit. Dimensions and square footage are approximate and may vary with actual construction. All fixtures and items of finish and decoration are for display only and are not to be included with the unit. Consents the preparation for a description of these fixtures which are to be included in the unit. The fixtures, plans and specifications described above are prepared only and the Developer reserves the right to modify, correct or withdraw any or all of same in its sole discretion and without prior notice. Without limiting the generality of the foregoing, Developer reserves the right to substitute any of the foregoing with items of similar or better value, in Developer's opinion. The photographs contained in this brochure have been taken with all care and are merely intended as illustrations of the activities and coverage depicted therein.

CATALFUMO