

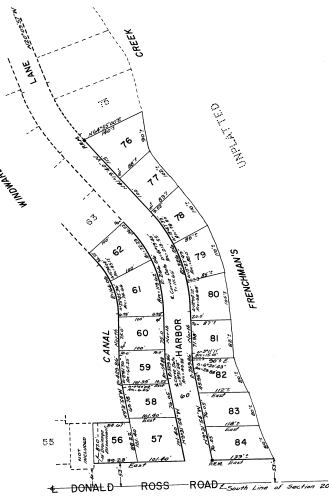
This is not a certified copy



REPLAT OF LOTS 56-62, AND 76-84 INCL.
PARADISE PORT
 AS RECORDED IN PG 26 PG 26 PALM BEACH COUNTY PUBLIC RECORDS
 LYING IN THE EAST HALF OF THE SOUTHWEST QUARTER SECTION 20, TOWNSHIP 41 SOUTH, RANGE 43 EAST
 PALM BEACH COUNTY, FLORIDA
 APRIL, 1959 SCALE: 1"=100'
E. ELLIOTT GROSS & ASSOCIATES
 REGISTERED ENGINEERS & SURVEYORS

PARADISE PORT
Pg 26

PARADISE PORT
Pg 26



STATE OF FLORIDA
 COUNTY OF PALM BEACH
 I HEREBY CERTIFY that the above described plat was prepared by the State of Florida and the County of Palm Beach, Florida, and that the same is a true and correct representation of the same as shown on the ground and that the same is a true and correct representation of the same as shown on the ground and that the same is a true and correct representation of the same as shown on the ground.

IN WITNESS WHEREOF the said Corporation has caused these presents to be signed by its President and attested by its Secretary, and its Corporate Seal to be hereunto set, this 21st day of April, A.D. 1959.

Attest
 By: Lisa C. Ditz
 Secretary

DEITZ ENTERPRISES, INC.
 By: Matthew J. Scott
 President



STATE OF FLORIDA
 COUNTY OF PALM BEACH
 I HEREBY CERTIFY that the above described plat was prepared by the State of Florida and the County of Palm Beach, Florida, and that the same is a true and correct representation of the same as shown on the ground and that the same is a true and correct representation of the same as shown on the ground.

My Commission expires: 10-24-61

By: Matthew J. Scott
 Attorney



STATE OF FLORIDA
 COUNTY OF PALM BEACH
 I HEREBY CERTIFY that the above described plat was prepared by the State of Florida and the County of Palm Beach, Florida, and that the same is a true and correct representation of the same as shown on the ground and that the same is a true and correct representation of the same as shown on the ground.

My Commission expires: 10-24-61

By: Matthew J. Scott
 Attorney



APPROVED
 Board of County Commissioners, A.D. 1959

By: Leo Lytel
 Chairman

By: Alvin C. Mott
 County Engineer



NOTE:
 1. There shall be no buildings or utility easements.
 2. There shall be no buildings or any kind of construction.
 3. The platting of these lots shall be subject to the requirements of the Platting Act, Chapter 218, Florida Statutes.
 4. Building setbacks shall be as required by law.
 5. Utility easements for utility lines shall be as required by law.